

LO: To read time to the nearest minute

Write the time shown in words beneath each clock. The first one has been done for you.



22 minutes to 9



20 minutes past 10



11 minutes past 5



27 minutes past 6



3 minutes past 2



16 minutes past 3



29 minutes past 11



21 minutes past 12



6 minutes to 5

LO: To read time to the nearest minute

Write the time shown in words beneath each clock. The first one has been done for you.



28 minutes to 1



13 minutes past 5



7 minutes past 10



23 minutes past
4



6 minutes past
8



7 minutes to 12



10 minutes to
3



6 minutes past 6



24 minutes to 10

LO: To read time to the nearest minute

Write the time shown in words beneath each clock and then in digital time. The first one has been done for you.



28 minutes to 1



13 minutes past 5



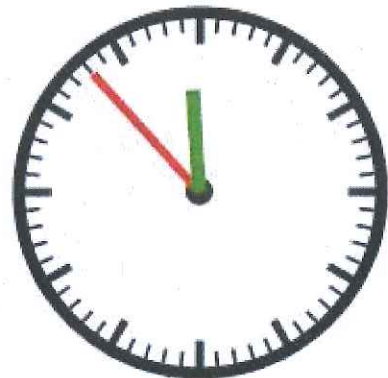
7 minutes past 10



23 minutes past
4



6 minutes past
8



7 minutes to 12



10 minutes to
3



6 minutes past
6



24 minutes to 10